



REC# : 752832  
 RECORDED 5/8/2019 AT 1:19 PM BK# 2620 PG# 1874  
 Debra K. Lee, CLERK OF LARAMIE COUNTY, WY PAGE 1 OF 1

# STATE OF WYOMING CORNER RECORD

(In compliance with the CORNER PERPETUATION AND FILING ACT, Wyoming Statutes, 1997 Section 33-29-140, et. seq., and the Rules and Regulations of the Board of Registrations for Professional Engineers and Professional Land Surveyors)

## SOUTH QUARTER CORNER SECTION 13, T. 18 N., R. 63 W., 6TH P.M., LARAMIE COUNTY, WYOMING

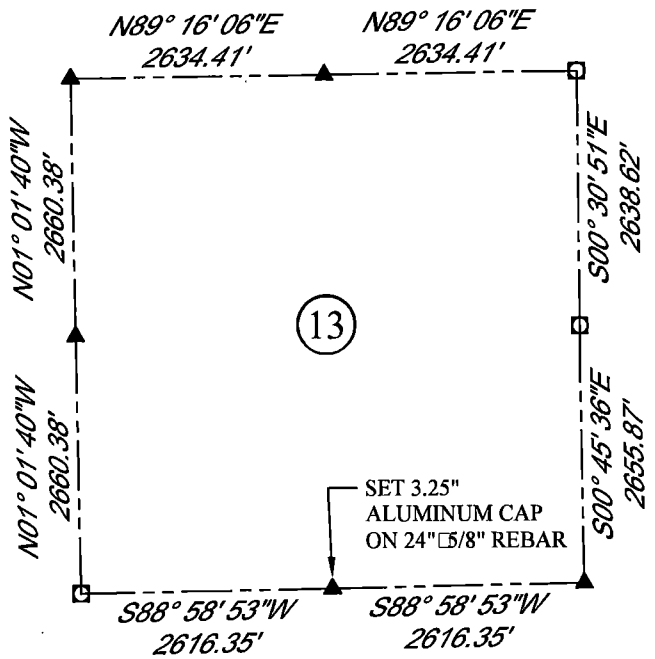
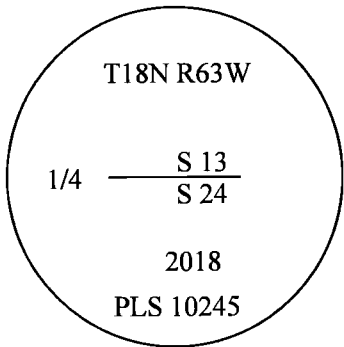
GLO: SET A SANDSTONE 16X12X6, 10 IN. DEEP, MARKED 1/4 ON N. SIDE FOR 1/4 SEC. COR.

FOUND: NOTHING. SET ALUMINUM CAP AT PROPORTIONATE(SINGLE) DISTANCE.



SCALE: 1" = 2000'  
 NORTH DETERMINED BY  
 G.P.S OBSERVATIONS

SET 3.25" ALUMINUM CAP  
 ON #5 REBAR, 2" ABOVE  
 SURFACE, STAMPED AS  
 SHOWN.



**LEGEND:**

- FOUND BLM CAP
- FOUND USFS CAP
- FOUND STONE
- FOUND PRIVATE MONUMENT
- ◆ CALCULATED POSITION
- ▲ SET MONUMENT (LS10245)
- SECTION LINE

DATE OF FIELD WORK: 9/24/2018 OFFICE REFERENCE: MERIDEN

**CROSS INDEX DIAGRAM**

A	1	2	3	4	5	6	7	8	9	10	11	12	13	14	15	16	17	18	19	20	21	22	23	24	25	A	
B																										B	
C						6																				C	
D							5																				D
E																											E
F																											F
G						7																					G
H							8																				H
J																											J
K																											K
L						18																					L
M							17																				M
N																											N
O																											O
P						19																					P
Q							20																				Q
R																											R
S																											S
T						30																					T
U							29																				U
V																											V
W																											W
X						31																					X
Y							32																				Y
Z																											Z
	1	2	3	4	5	6	7	8	9	10	11	12	13	14	15	16	17	18	19	20	21	22	23	24	25		

WOOD  
 2615 AVIATION DRIVE  
 SHERIDAN, WY 82801  
 PH: 307-675-6400



THIS CORNER RECORD WAS  
 PREPARED BY ME OR UNDER  
 MY DIRECTION AND  
 SUPERVISION,  
 SEAL AND SIGNATURE

